



Epson printhead application guide

Package Corrugated



Package printing these days

Packages are ubiquitous.

Product packaging plays an important role that goes well beyond that of just a simple container. Packages protect products, provide essential information, and offer consumers with a sense of satisfaction.

On the other hand, environmental impact has joined strength and appearance as an essential packaging consideration, and consumption of corrugated cardboard packaging, a renewable material, is increasing year by year. Retail packages made of plastic are increasingly being replaced by corrugated cardboard and paper packages.

Advantage of digital printing

Analog printing is currently the most commonly used method for printing on cardboard. However, digital printing is sometimes better suited to certain areas. Digital printing on corrugated cardboard, for instance, has the following advantages:

- The simpler printing process makes it possible to print a variety of products in a short cycle.
- Printing can be done relatively easily without the need for ink preparation and plate alignment.
- Environmental impacts are lower since post-printing cleaning of plates and equipment is either eliminated or simplified.



Advantage of Epson printhead

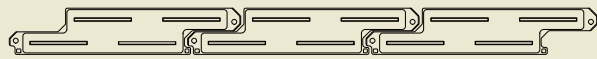
The printheads are manufactured using Epson's microfabrication technology and provide extraordinarily accurate ink droplet placement.

- The printheads enable exceptional print quality even at high speeds because of the small variation in dot placement.
- High print quality and stable operation can be achieved by using the best waveform parameters for the object being printed and for the throughput, even when the distance between heads and materials being printed is large.
- With an extensive lineup of printheads,

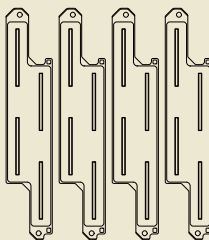
Epson can support a wide range of equipment configurations as well as quality and cost requirements.

Configuration example

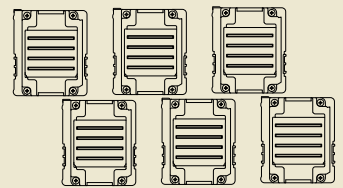
S3200 printbar



S3200 scanning array



I3200 printbar



Printhead recommendation for package printing (corrugated)



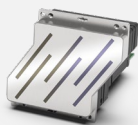
S3200 series

UV/Eco-Solvent AQ



I3200(4)/I1600/I3200(8) series

UV/Eco-Solvent AQ



D3000 series

AQ

EPSON
EXCEED YOUR VISION



Global: <https://inkjet-solution.epson.com>
 Japan: <https://www.epson.jp/products/inkjethead/>
 China: <https://www.epson.com.cn/Apps/PH/index.aspx>
 US: <https://epson.com/inkjet-printheads>

<Notice>

- The product usages are an example, and it's not always applicable for each printing application.
 - Product specifications and document description are subject to change without notice.